

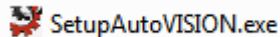
Using Visionscape FrontRunner after AutoVISION Installation

AutoVISION and Visionscape are installed simultaneously when you double-click the installation file (**SetupAutoVISION.exe**) and follow the prompts.

This document describes how to locate and use Visionscape software's SoftSys (emulator) after installing AutoVISION and Visionscape.

Install the Software

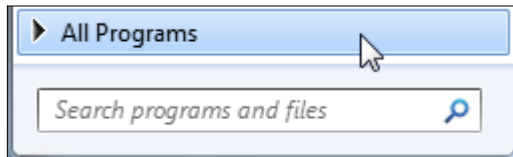
- Download **autovision_setup_[version number].zip** from Microscan's website and extract the **SetupAutoVISION.exe** file, or locate the file on the Microscan Tools Drive.



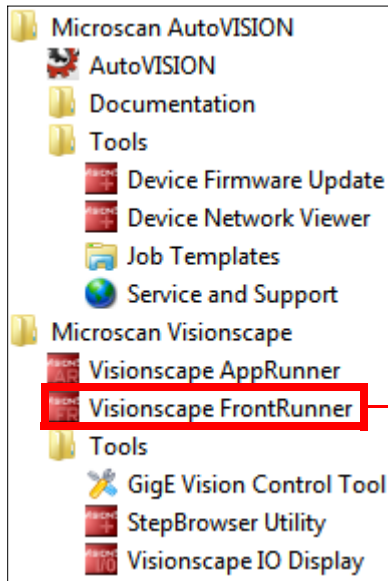
- Double-click **SetupAutoVISION.exe**.
- Follow the AutoVISION InstallShield Wizard prompts.

Locate Visionscape FrontRunner

- Navigate to the Windows Start Menu and click **All Programs**.

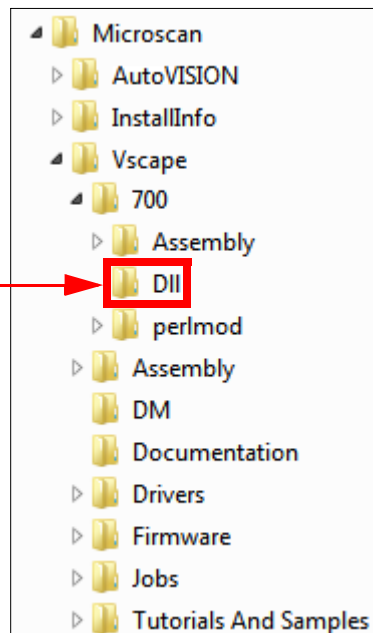


- Open the **Microscan Visionscape** folder and click on **Visionscape FrontRunner**. This points to the **FrontRunner.exe** file in the **C:\Microscan\Vscape\[version number]\DII** folder on your C: drive.



Opening FrontRunner from the Start Menu

Location of FrontRunner.exe on the C: Drive



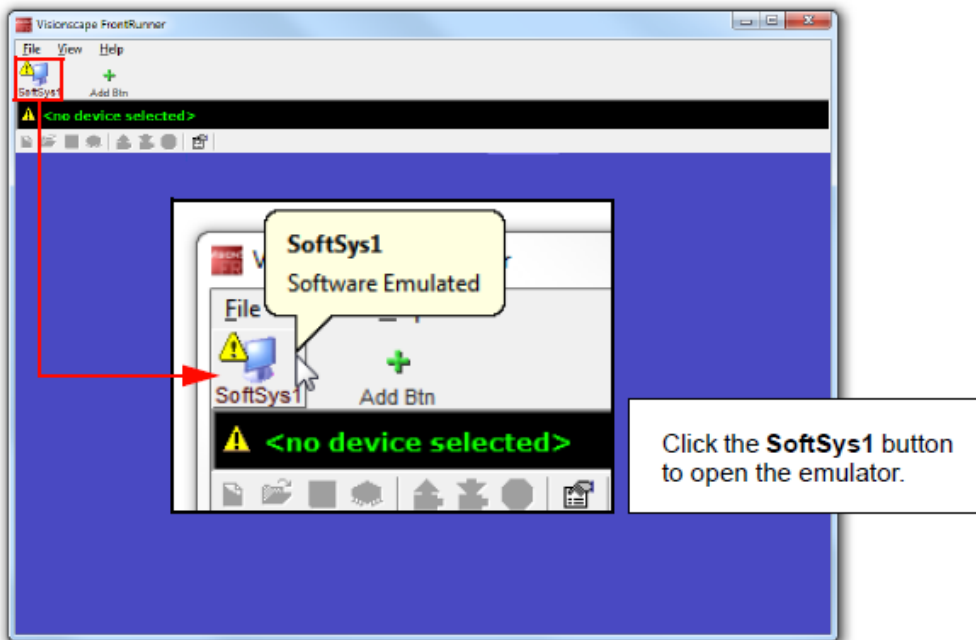
(continued next page)

Open a Job in FrontRunner

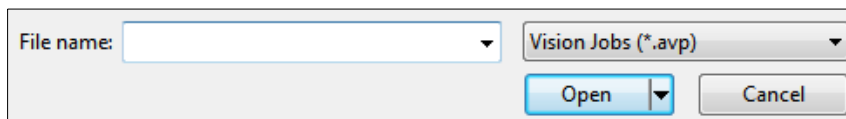
- The FrontRunner splash screen will appear after you have clicked **Visionscape FrontRunner** in **Start Menu > All Programs > Visionscape FrontRunner**.



The FrontRunner user interface will appear after a few seconds.



- After you have clicked the **SoftSys1** button, click the folder icon to browse for an **.avp** file. Once you have selected your **.avp** file, you can configure the job in FrontRunner.



Important: If you wish to use Visionscape software with a smart camera, you must upgrade your camera's license. See the *AutoVISION Software User Manual* or the help documentation in AutoVISION software for detailed information about camera license upgrades.